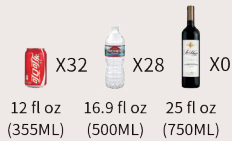
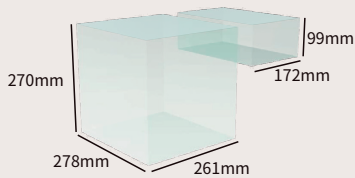
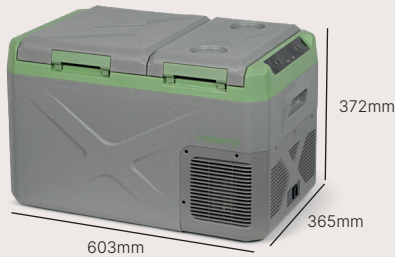
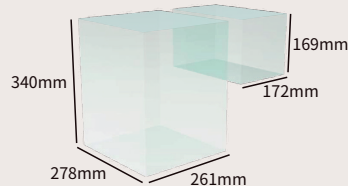
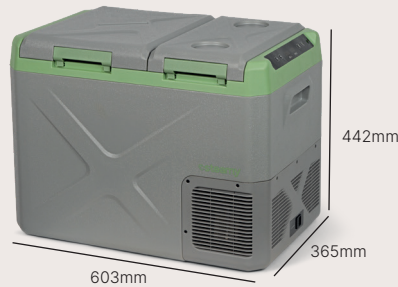
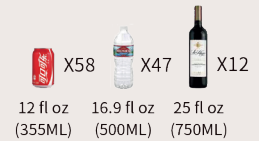
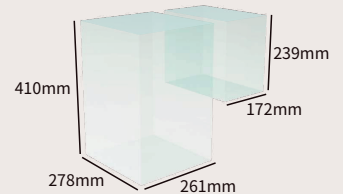
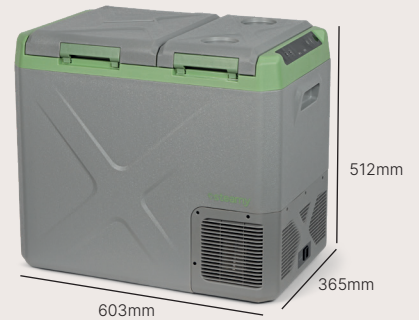


SECXD35

SECXD45

SECXD55


Features

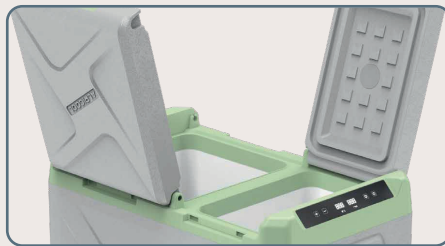
- Fridge/Freezer combo: dual compartments with separate door, single temperature control, -20°C (-4°F) to 20°C (68°F) powerful chilling performance.
- Reversible door make door opening more flexible.
- Three-stage Car Battery Protection: With temperature memory function & three-stage battery protection system to prevent the vehicle from running out of battery.
- Specific parts: LED control panel, door latch, drain plug, cup holders, optional basket, optional APP control.
- Fit Anywhere: Car /Jeep /Truck /Home /Dorm /Cottage /Garage /RV /Boat /Outdoor (DC/AC).
- Rugged design: Shockproof and durable design for handling rocky road. Incline Operation up to 45° angle for a short time.
- Quiet operation: less than 45db, just like living in a quiet suburb.
- Adjustable Running Mode: Two different modes can be adjusted as needed (Fast cooling/ Energy saving).

MODEL:	SECXD35	SECXD45	SECXD55
TOTAL CAPACITY:	23.7L/25Quarts/0.83Cu.Ft	32L/34Quarts/1.13Cu.Ft.	39.7L/42Quarts/1.4Cu.Ft.
COMPARTMENT 1 (FRIDGE/FREEZER):	4.9L/5Quarts /0.17Cu.Ft	8.3L/9Quarts /0.29Cu.Ft	11.4L/12Quarts /0.4Cu.Ft
COMPARTMENT 2 (FRIDGE/FREEZER):	18.8L/20Quarts /0.66Cu.Ft	23.7L/25Quarts /0.84Cu.Ft	28.3L/30Quarts /1Cu.Ft
POWER SUPPLY:	12/24V DC,100-240V AC	12/24V DC,100-240V AC	12/24V DC,100-240V AC
RATED CURRENT:	AC 1.2A-0.5A DC 5.0A/2.5A	AC 1.2A-0.5A DC 5.0A/2.5A	AC 1.2A-0.5A DC 5.0A/2.5A
FRIDGE DIMENSION (W X D X H):	603*365*372mm 23 3/4 *14 3/8 *14 5/8inch	603*365*442mm 23 3/4*14 3/8 *17 3/8inch	603*365*512mm 23 3/4*14 3/8 *20 3/16inch
PACKING SIZE (W X D X H):	646*417*427mm 25 7/16*16 7/16*16 13/16inch	646*417*497mm 25 7/16*16 7/16*19 9/16inch	646*417*567mm 25 7/16*16 7/16*22 5/16inch
NET WEIGHT:	11.5kg/25.4lbs	12.5kg/27.6lbs	13.2kg/29.1lbs
GROSS WEIGHT:	13.8kg/30.4lbs	14.8kg/32.6lbs	15.6kg/34.4lbs
FRIDGE/FREEZER (COMBINATION):	-20~20°C (-4~68°F)	-20~20°C (-4~68°F)	-20~20°C (-4~68°F)
FCL QUANTITY:	220/460/552	176/368/460	176/368/368
RATED POWER INPUT:	60W	60W	60W
NOISE LEVEL:	<45dB	<45dB	<45dB

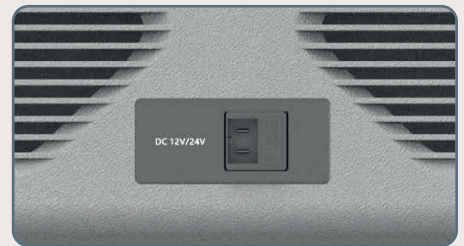
*Due to product improvement, the technical information might be different from actual information, please refer to the rating label on the product. (Note:±3°C temperature difference is permitted)



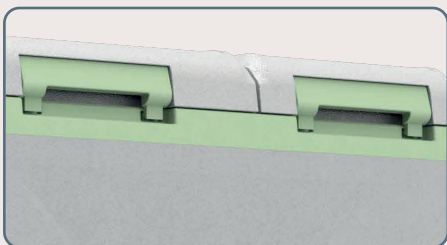
LED display



Reversible door



AC/DC dual use



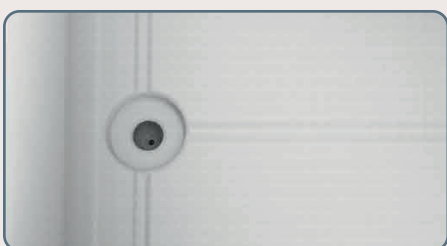
Durable latch



Recessed handle



Cup holders



Drain plug



Interior chamber